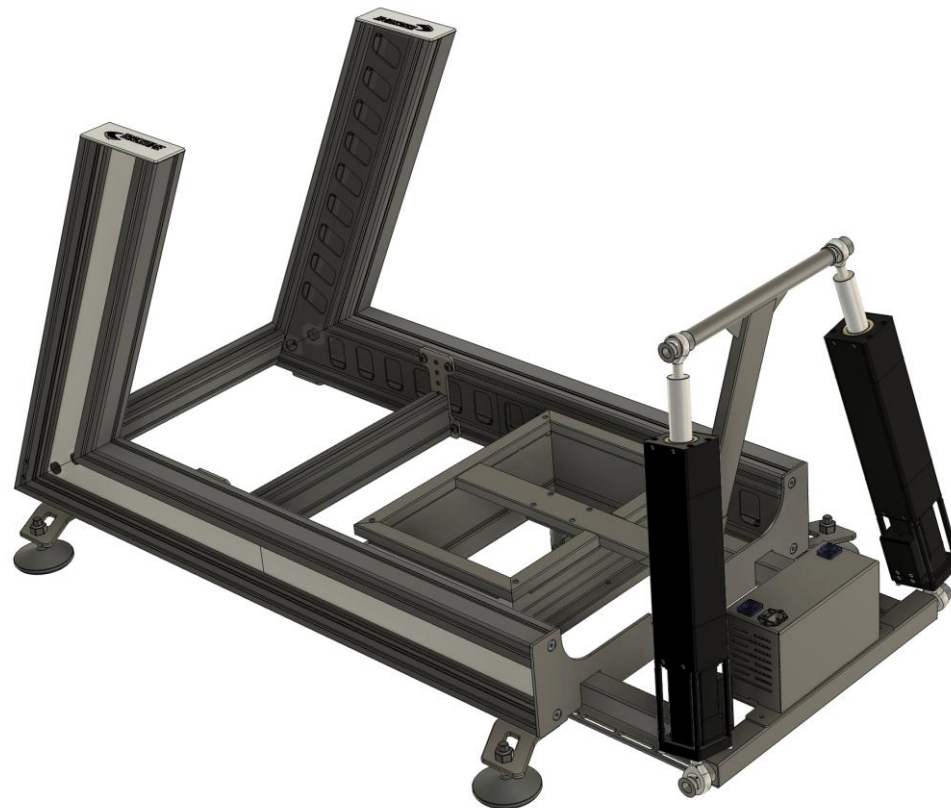


# **TRACKTIME**

series **/one**



**75140001 2motion addon for Series  
One**  
Version 1.1

# BEFORE STARTING THE BUILD

The following are needed for assembly:

- Soft base / underlay (scratch protection)
- A set of hex wrenches
- Ratchet with 13mm nut
- Hammer (mallet)
- Tape measure / ruler
- A buddy who can lend a hand

**Read the manual first. All remarks are important and could help you avoid problems.**

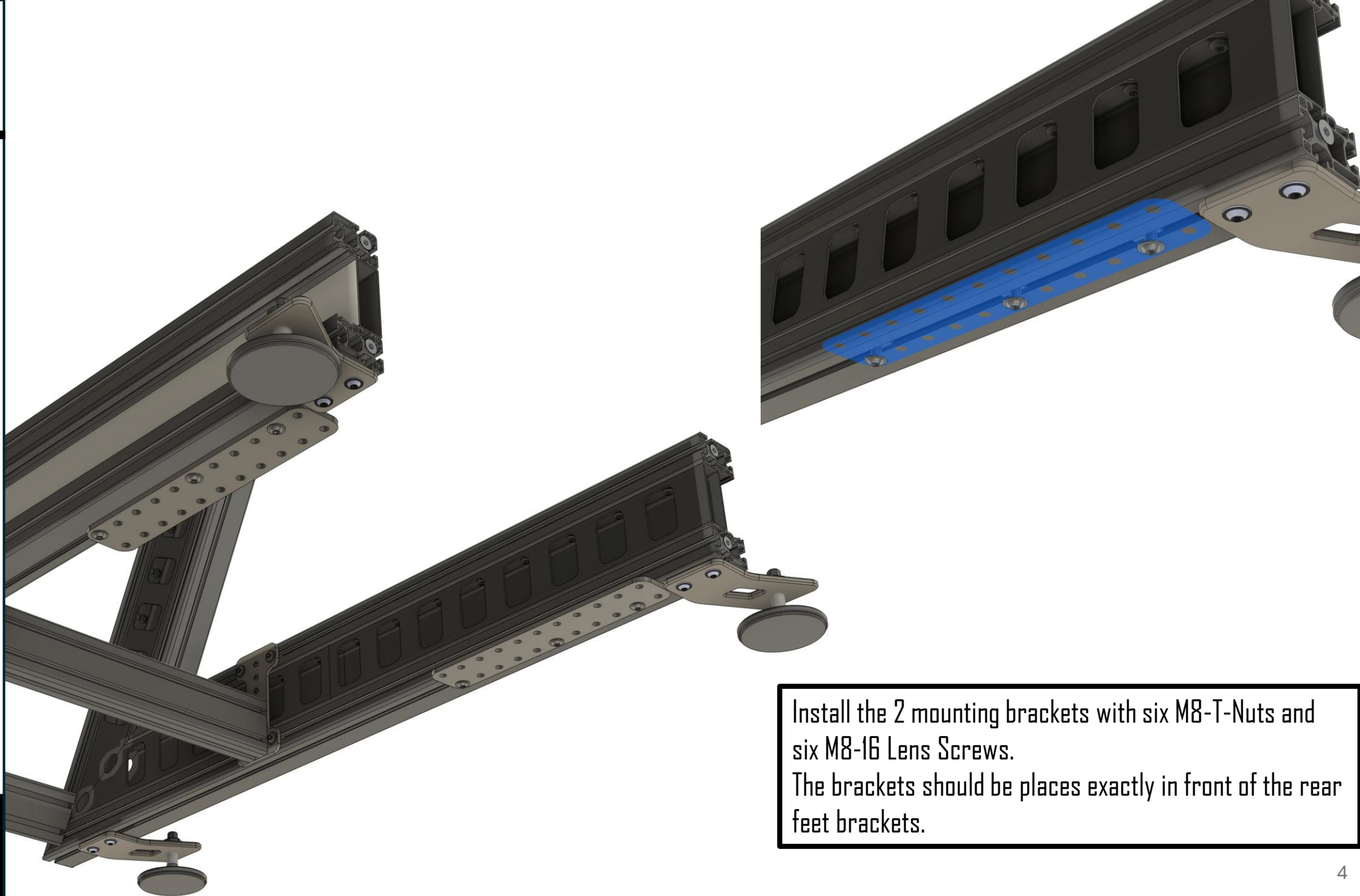
Use BOM (Bill of Material) to find the sizes and lengths of the parts.



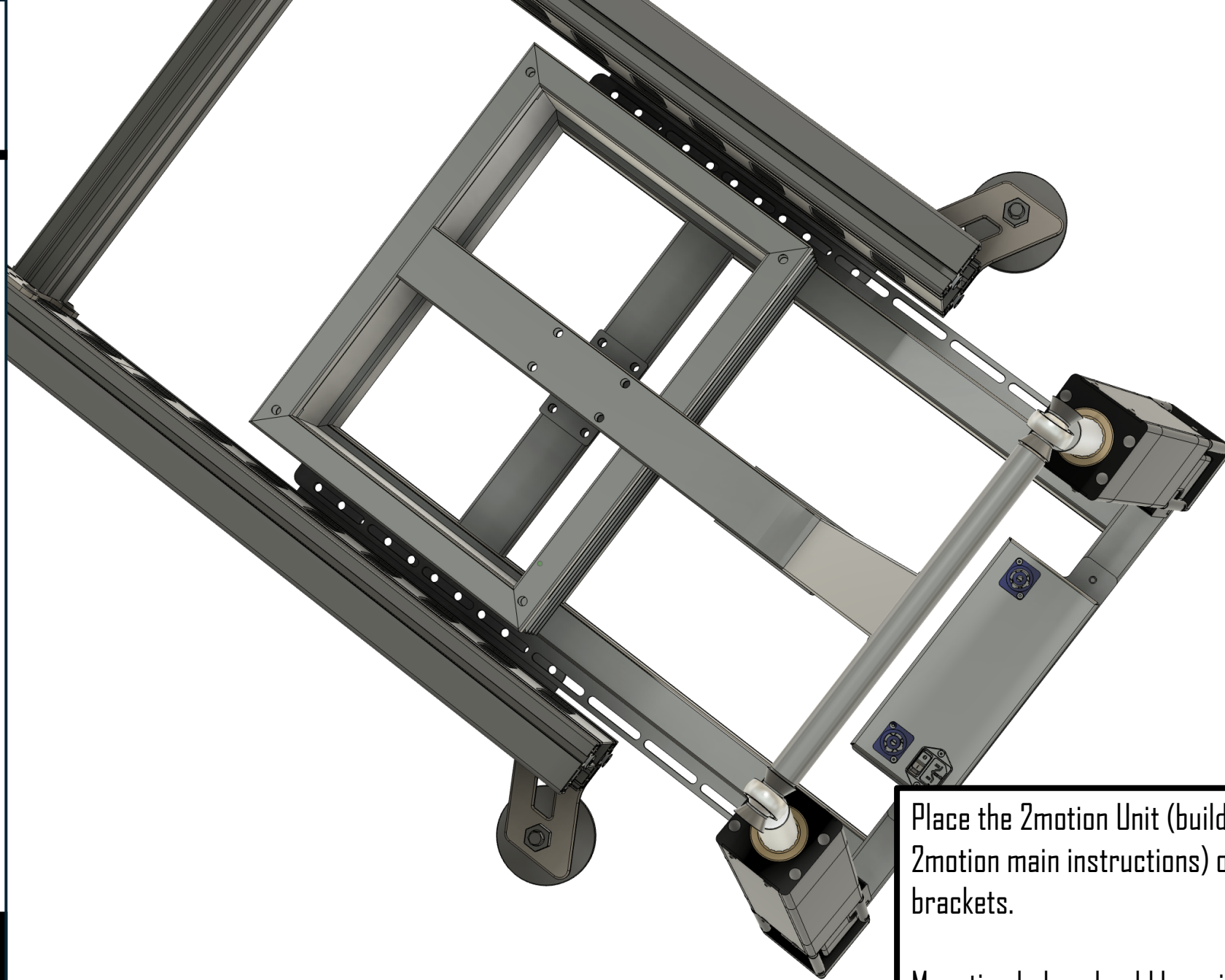


Prepare your Rig.

- Remove the rear seat bracket.
- Slide the front seat bracket 700mm to the front.
- Slide the rear feet to the rear edge of the frame



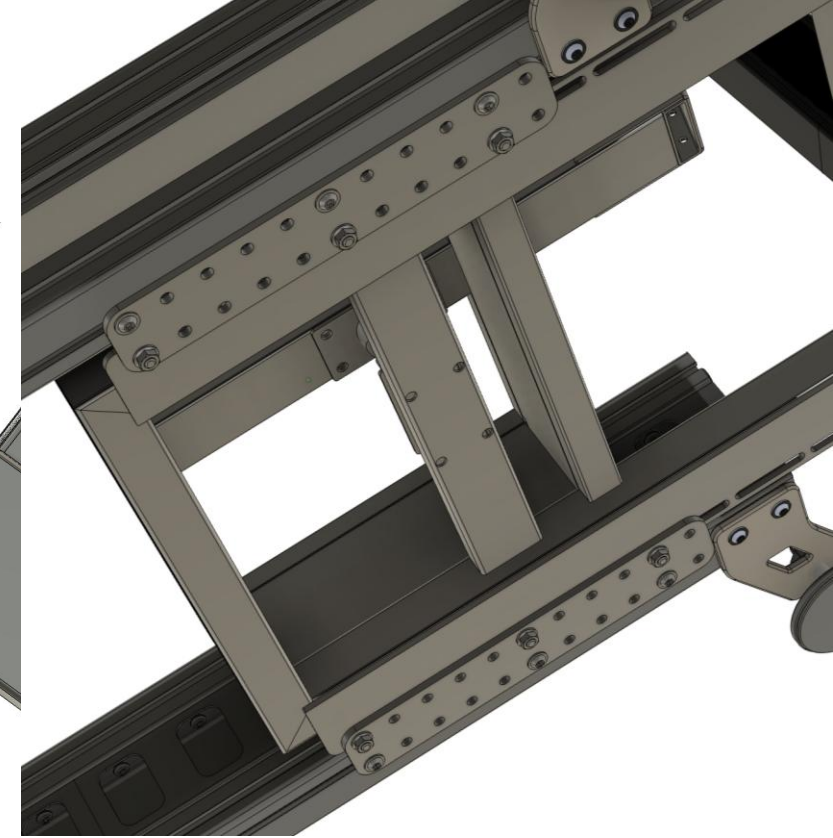
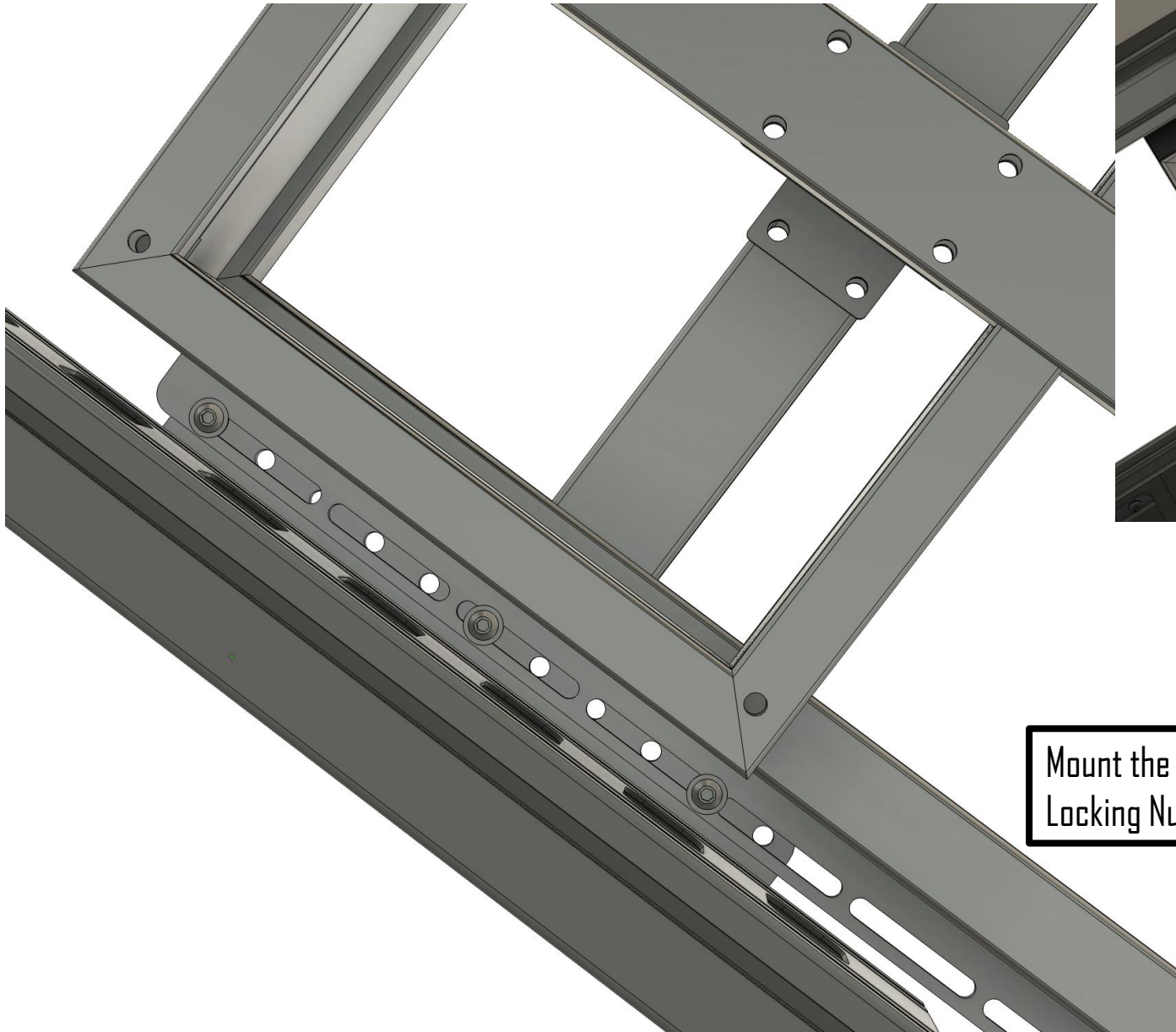
Install the 2 mounting brackets with six M8-T-Nuts and six M8-16 Lens Screws.  
The brackets should be placed exactly in front of the rear feet brackets.



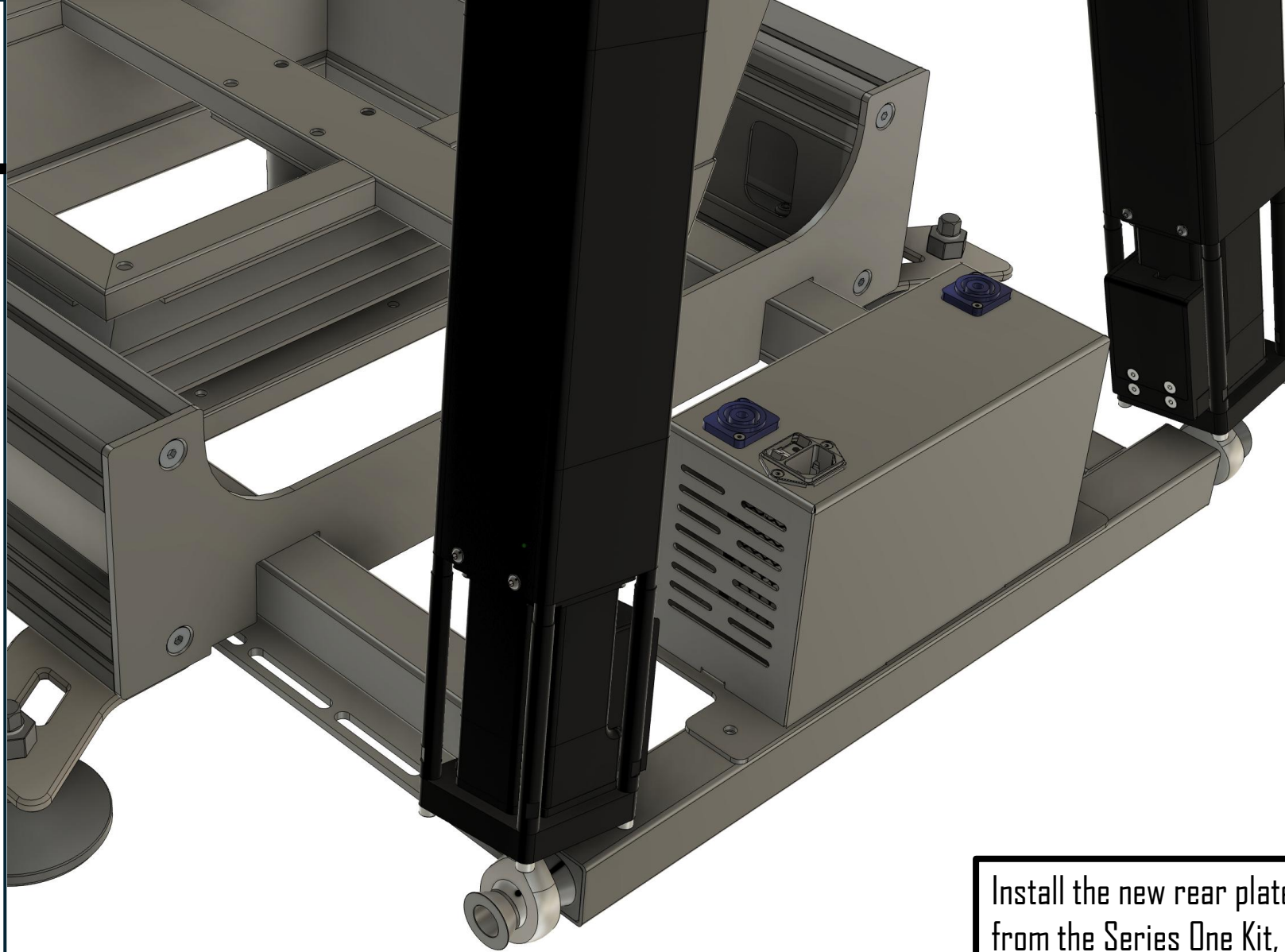
Place the 2motion Unit (build process described in the 2motion main instructions) on top of the mounting brackets.

Mounting holes should be orientated like in the picture



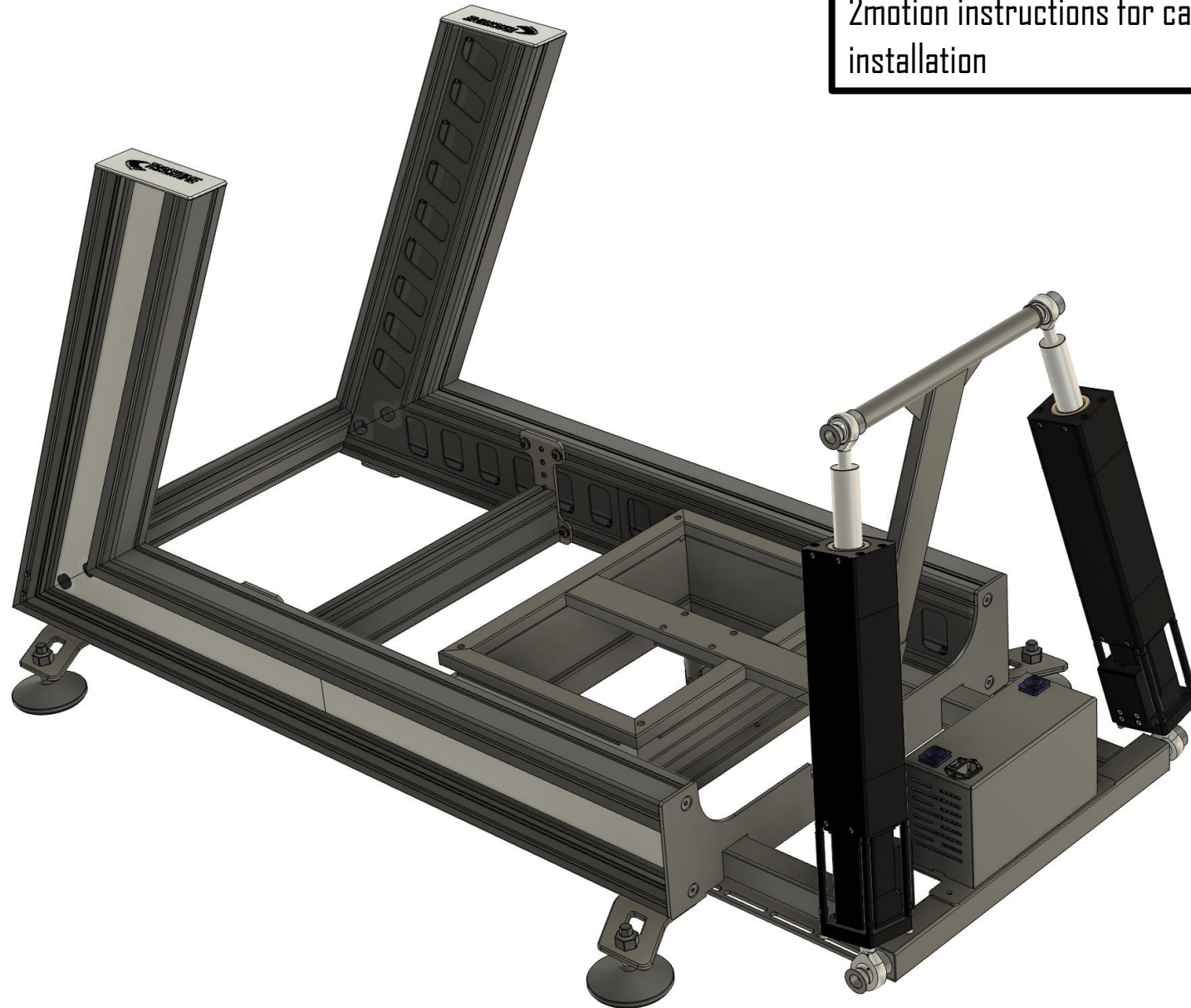


Mount the Unit with six M8x20 Lens Screws and six M8 Locking Nuts



Install the new rear plate. Store or scrap the old one from the Series One Kit,

You finished the mechanical build, Follow the main 2motion instructions for cable connections and PC installation





## Need help? Scan for help & resources



If you have any further questions about assembling this product or about the manual itself, please contact our support department. You can reach them at

[info@track-time.de](mailto:info@track-time.de)